

# Millfield, Garron Bridge, Clyde Valley, Lanarkshire, ...

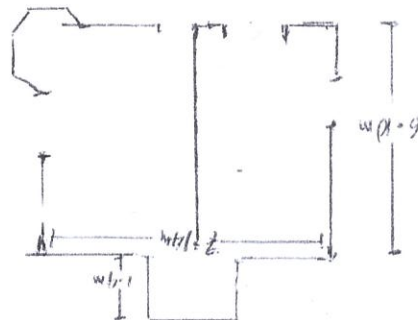
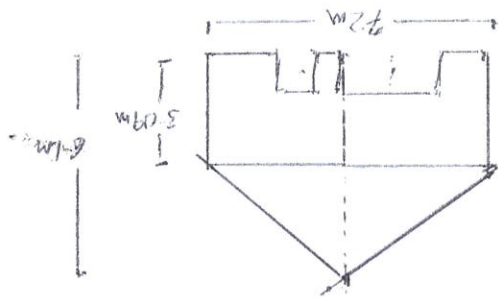
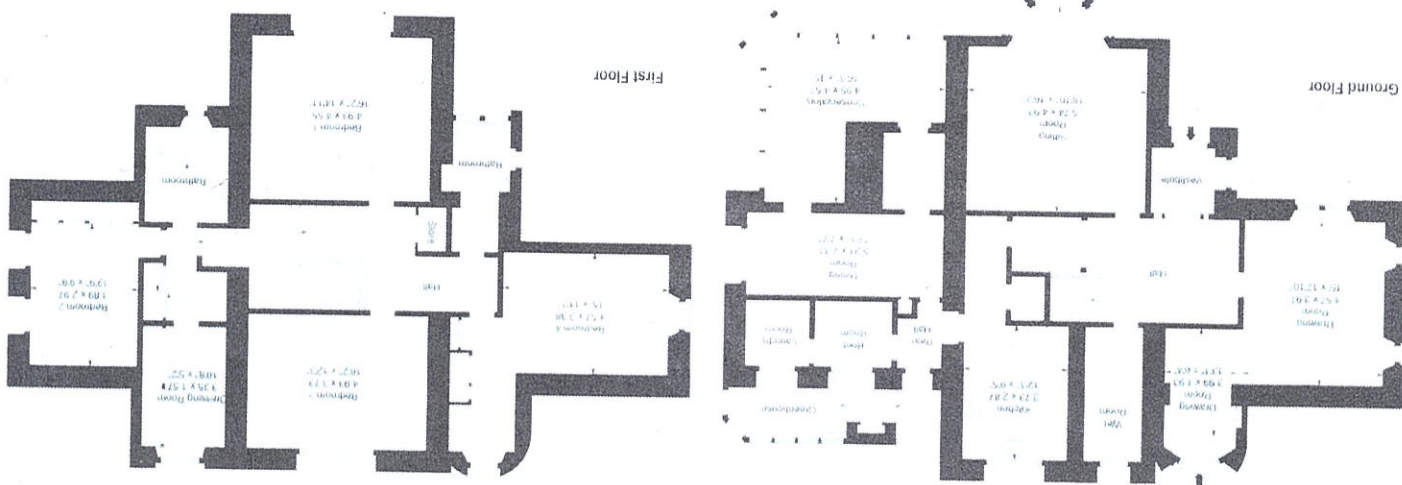
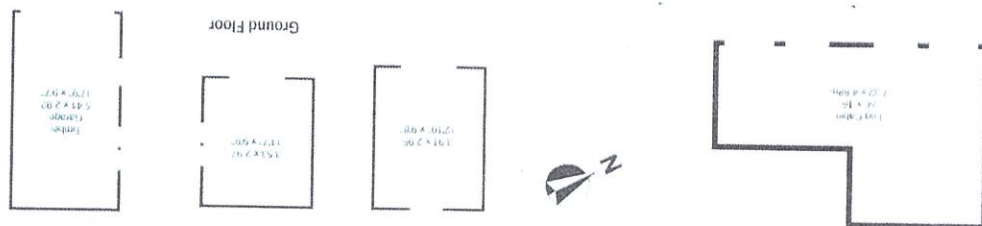
£850,000



## Floorplan

Gross internal area (approx)  
 291.52 sqm (3138 sq.ft)  
 Garage & Out Buildings  
 Gross internal area (approx)  
 65.31 sqm (703 sq.ft)  
 For information only. Not for lease.  
 © Stewart 2023

Millfield,  
 Garron Bridge,  
 Wishaw, ML2 0RQ



STABLES