

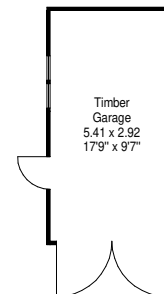
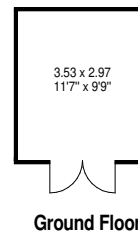
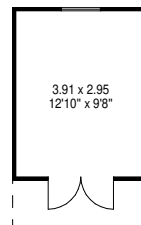
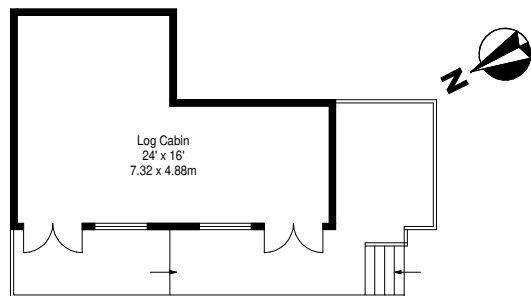
**Millfield,
Garrison Bridge,
Wishaw, ML2 0RR**



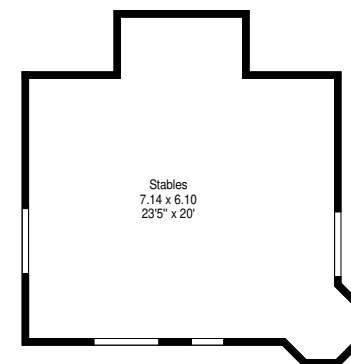
Gross internal area (approx)
291.52 sq.m (3138 sq.ft)

Garage & Out Buildings
Gross internal area (approx)
65.31 sq.m (703 sq.ft)

For Identification Only. Not To Scale.
© SquareFoot 2023.



**Stables,
Millfield,
Garrison Bridge,
Wishaw, ML2 0RR**
Gross internal area (approx)
43.55 sq.m (468.78 sq.ft)



Ground Floor

